

料号	236J530-E71-01B	版本	1.0
材质	100克双胶	尺寸	285X210mm
日期	2021.07.15	页数	2
表单编号		版本	1.0

OPERATION

When the unit is first powered on, a long beep will be made, at the same time the indicator lights of full-flush and half-flush lights will illuminate for a few seconds before flashing 3 times. Then the product will then be ready to use.

- **Reduced Flush:** Hover your hand over the smaller right-hand circle to activate the flush. The LED light will illuminate.
- **Full Flush:** Hover your hand over the larger left-hand circle to activate the flush. The LED light will illuminate.

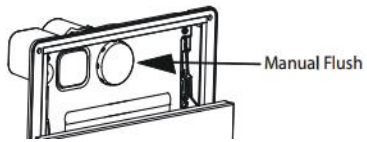
If the flush plate is touched for more than 5 seconds it won't flush.

LOW BATTERY

When the battery power is low, the product can still work normally. The LED light will flash 10 times and an alarm will sound for 10 seconds to remind the user the batteries are low. When there is no power, the LED light will slowly flash with a frequency of 2 times per second and the bell will sound. If batteries are exhausted completely, the glass panel can be removed to reveal the manual flush button. The manual over-ride is not intended as a long-term solution.

MANUAL OVERRIDE

When using the manual push button, un-plug the cable ribbon and take the front glass off the chain links. Keep safe to prevent damage.



SPECIFICATIONS

Batteries	4 x AA (not included)
Ingress protection	IPX4
Sensor distance	0-60mm (from glass panel)
Sensing time	0.2-5 seconds
Weight	0.7 kg

SUPPORT

Recycling facilities are now available for all customers at which you can deposit your old electrical products. Customers will be able to take any old electrical equipment to participating sites run by their local councils. Please remember that this equipment will be further handled during the recycling process, so please be considerate when depositing your equipment. Please contact the local council for details of your local household waste recycling centers.

At the time of printing the product contains no substances listed within Annex XIV of the Reach Regulations (EC) 1907/2006. In accordance with Article 59 of the same regulation the following substances are contained within the product at permitted levels: Lead & Cadmium. As a responsible manufacturer the regulations are monitored to ensure continued compliance. Further information can be provided upon request.

For more information
• visit betterbathrooms.com
• email customerservices@buyitdirect.co.uk
• call 0330 390 3062
• write to Trident Business Park, Leeds Road, HD2 1UA

**better
bathrooms**
Part of the BuyItDirect Group

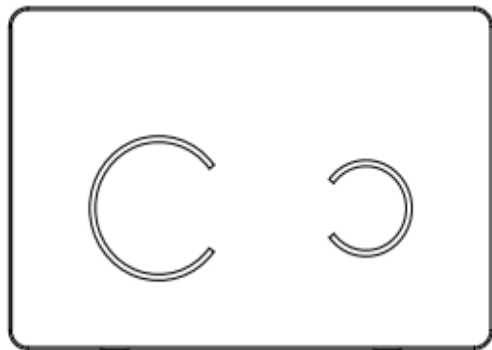
USER MANUAL



Thank you for choosing Better Bathrooms.
Please read this manual before installing your product
and keep for future reference.

**better
bathrooms**

SENSOR
FLUSH PLATES



BeBa_27401

BeBa_27402

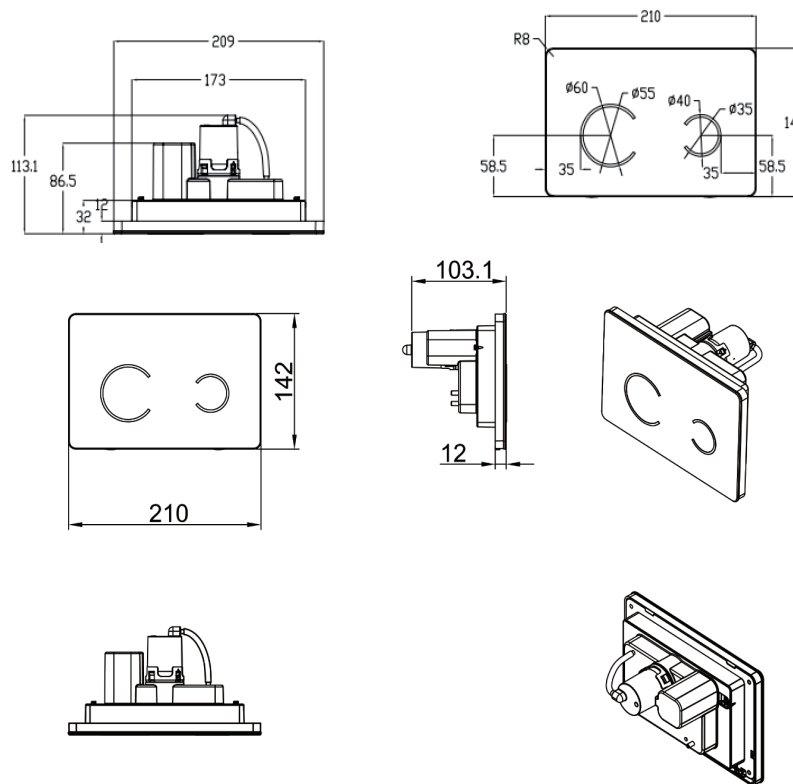
- GESTURE CONTROL
- LOW BATTERY WARNING
- EASY INSTALLATION

V20220718

IMPORTANT SAFETY INSTRUCTIONS

- There are no user maintainable parts, do not attempt to disassemble or repair.
- Ensure the flush plate is situated in the correct position before installation and is not exposed to excessive heat or moisture.
- The device should not be exposed to excessive knocks or bumps.
- If the accessories are damaged, they must not be used, and replacements should be ordered from the manufacturer or retailer.

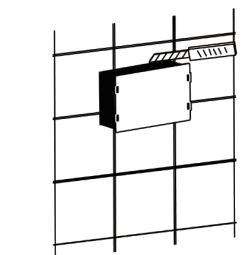
PRODUCT OVERVIEW



2

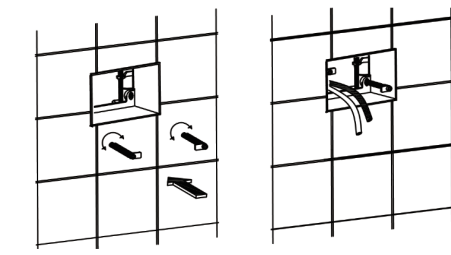
INSTALLATION

STEP 1



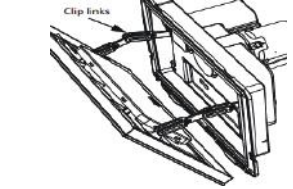
After you have chosen the ideal location for your sensor flush plate. Use the control panel base to mark where you wish to install the flush plate.

STEP 2



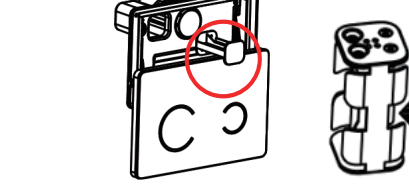
Measure the depth of the flush plate and create a cavity in the wall equal to the depth of the flush plate. Pull the pipes for installation through the cavity and thread them through the back of the base. Insert the base into the wall and screw the fixing arms (supplied) into position. The rods may need cutting down depending on the thickness of the finished wall/surface.

STEP 3



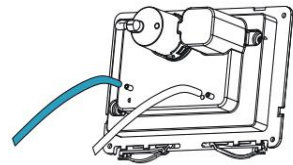
Remove the glass panel completely. Push the glass front down from the top and tilt the top towards you. Un-clip the glass by expanding the clip links and keep aside until installation is completed.

STEP 4



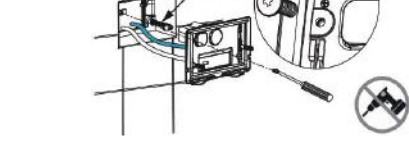
Remove the battery compartment by simply sliding it out of the unit as shown. Insert 4 x AA batteries (not included) into the battery compartment keep safe for further installation.

STEP 5



Connect the air hoses from the cistern to the flush plate as shown. Attach the blue hose to the semi-circle symbol and the transparent hose to the full circle symbol.

STEP 6



Make sure the cistern is fully commissioned before mounting the bracket in place. Locate the mounting bracket onto the fixing arms and secure the top left and bottom right corners with the screws provided and tighten with a screwdriver. Be careful not to overtighten. Re-connect the clip links and cable ribbon to the glass cover and insert the battery holder. Reinstall the glass plate. Once correctly installed the flush plate will illuminate for a couple of seconds.

3

236J530-E71-01B